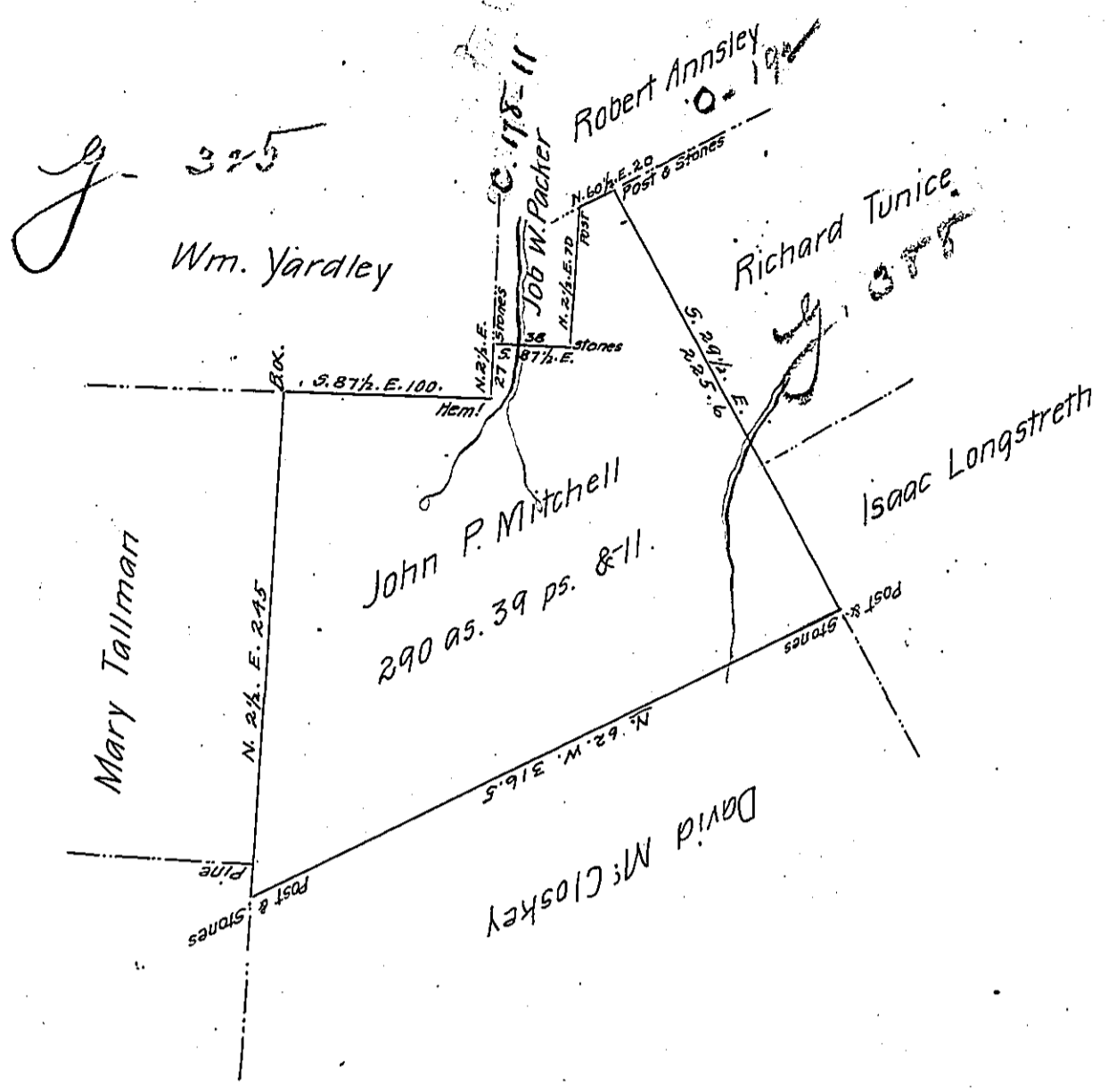


FORM NO. 1.



A tract of land Situated in Curtin township Centre County,  
 Containing two hundred and ninety acres and thirty nine Perches and the  
 Allowance &c. Surveyed the 11<sup>th</sup> day of August 1866 on a Warrant granted to  
 John P. Mitchell, Dated the 5<sup>th</sup> day of January 1866.

Henry P. Treziulny  
 County Surveyor

To J. M. Campbell Esqr.  
 Surveyor General }

IN TESTIMONY that the above is a copy of the original remaining on file in  
 the Department of Internal Affairs of Pennsylvania, made  
 conformably to an Act of Assembly approved the 16<sup>th</sup> day of  
 February, 1833, I have hereunto set my Hand and caused  
 the Seal of said Department to be affixed at Harrisburg,  
 this tenth day of March 1906

*Isaac N. Brown*  
 Secretary of Internal Affairs.